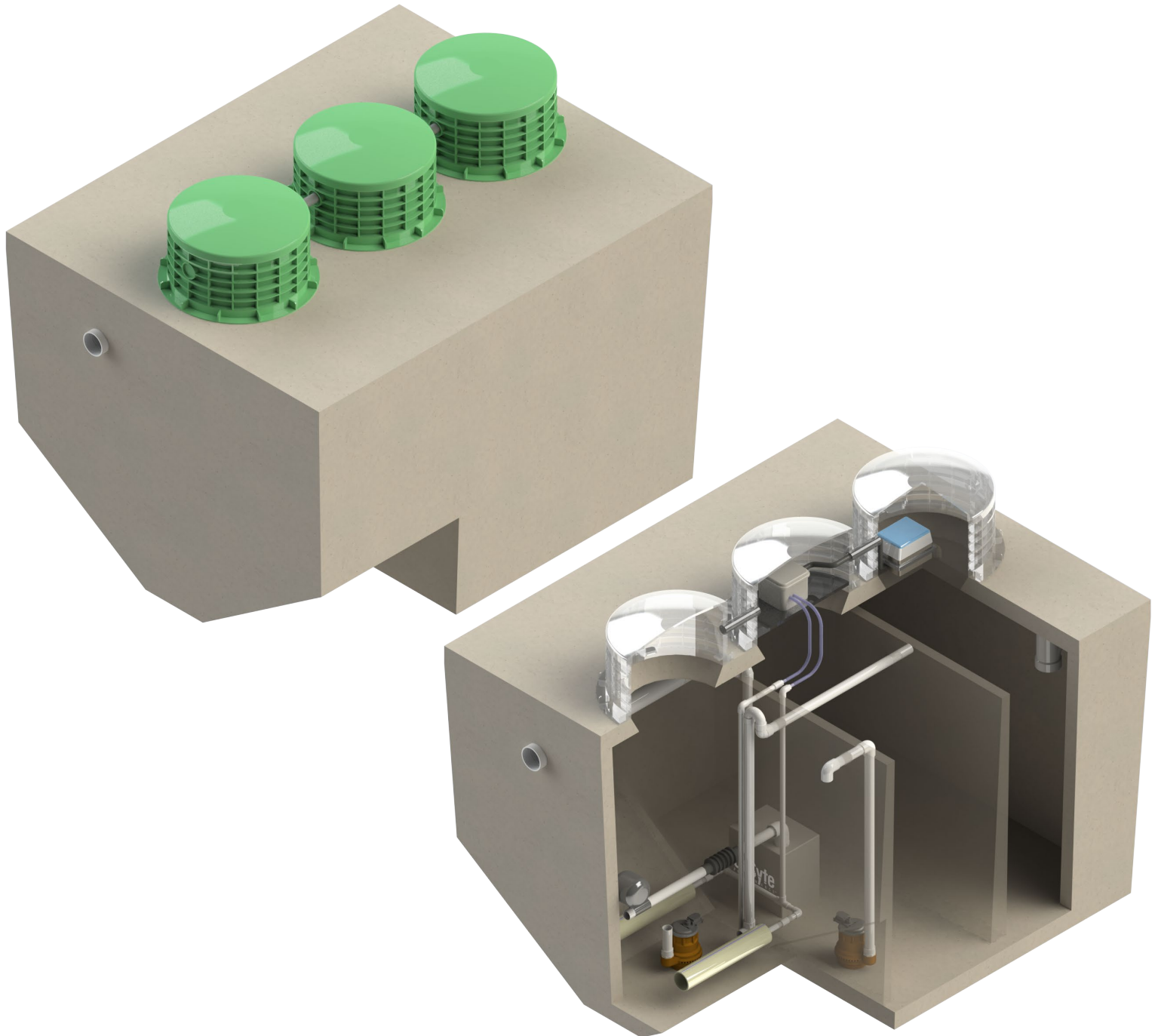
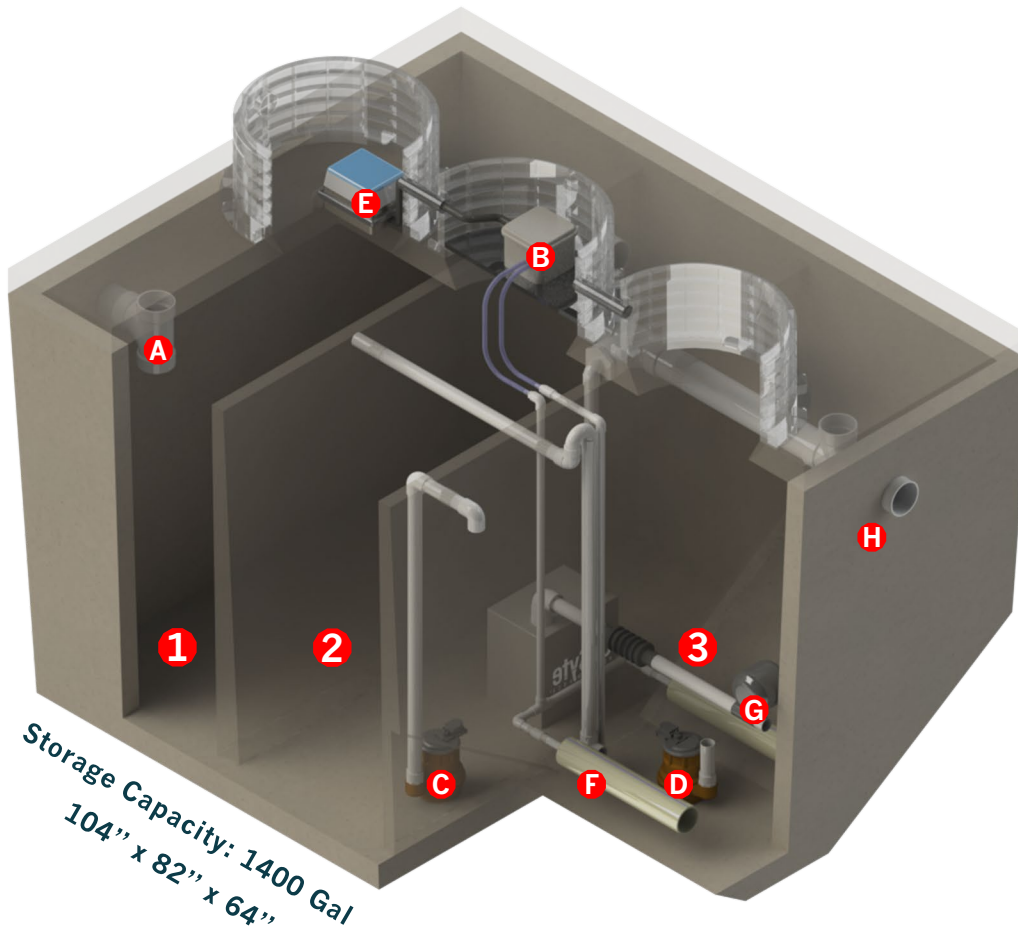


OnSyte Residential

Distributed Wastewater Treatment Unit





1. Sewage enters the Separation Chamber (1) from the Inlet (A) – primary treatment occurs.
2. Sewage gravity flows into the Dosing Chamber (2) –secondary settling occurs.
3. The controller (B) determines an appropriate batch size and transfers the selected volume to the Reaction Chamber (3), via a transfer pump (C) – Fill Mix (D) occurs.
4. The air blower (E) initiates aeration via twin fine air diffusers (F) – Reaction Occurs
5. Following Settling, Decanting occurs (G) – discharging the supernatant through the outlet (H).

Proven Design

Utilizing proven suspended growth activated sludge treatment, Sequencing Batch Reactors are recognized as an industry leading wastewater treatment technology.

Sustainable Performance

Utilizing naturally present bacteria, the OnSyte treatment system achieves greater than 80% reduction of Nitrogen and Phosphorus. In order to provide an ideal environment for the bacteria to efficiently treat the wastewater, the IOT compatible controller tailors a treatment process optimized for each household.

Real Time Monitoring

Each OnSyte System is continuously monitored through an IOT compatible controller located at the site. This optimizes performance while reporting any preventative maintenance needs with no interaction between the homeowner and the system.

Manufacturer's Warranty

OnSyte Performance treatment systems carry a warranty of:

- 20 Years on the Tank/Vessel
- 2 Years on all Electrical and Mechanical Components
- Extended Warranty Available